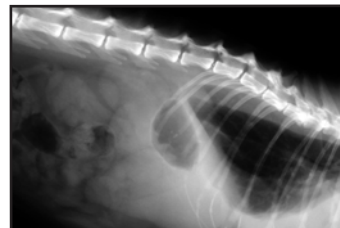


MedlinkDR_{VET}

Panels by Samsung



High-Performance Movable DR Flat Panel Detector

By: Samsung

System Components

- Single 14 x 17 in. a-Si TFT PIN Diode Movable Flat Panel detector
- Acquisition Workstation / Veterinary Software
- Control Box
- 30 ft. cable/power cord for panel (tethered)
- Detector housing (Optional)

Detector CsI:TI Scintillator

Technical Specifications

- Resolution: 2,400 x 2,880 pixels
- Detection area: 14 x 17 in.
- Pixel pitch: 150 µm
- 3.3 lp/mm.
- A/D Conversion: 14 bits
- Gray Scale: 16,384
- Dynamic range: >15000 LSB
- Energy range: 40 - 150 kV
- High resolution image display preview: 3 - 5 seconds
- Data output: 1 G Ethernet
- Dimensions: W: 49.1 cm. (19.3 in.) x L: 48 cm. (18.9 in.) x D: 1.5 cm. (0.6 in.)



Software Features

- Same software as used with MedlinkCR systems
- Workstation pre-configured prior to shipment
- Two (2) local and two (2) web viewers licenses

Viewing Tools

- Window level
- Rotate
- Repeat/Reject
- Archive
- Image Preview
- DICOM Print
- DICOM Store
- ...and much more

MedlinkDR_{VET} Acquisition Workstation

Dell Optiplex Workstation

- Intel Core i3 Dual Core Processor 540 w/VT (3.06 GHz, 4M)
- 2 GB, Non-ECC, 1333 MHz DDR3, 1 x 2 GB
- 1 TB hard drive
- 1 TB secured removable hard drive
- 16 x DVD +/- RW SATA optical drive
- Integrated Video, GMA 4500

Dell Professional Monitor

- 19 in. LCD, 1.3 MP
- Resolution: 1280 X 1024 pixels
- Ratio: 800:1 (typical)

Warranty

- 3 years on workstation and monitor
- 2 years on DR flat panel

Note:

Specifications are subject to change without notice. Revised: April 2011