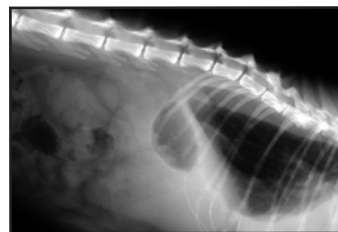


MedlinkDR_{VET}

Panels by Samsung



High-Performance Fixed DR Flat Panel Detector

System Components

- Single 17 x 17 in. a-Si TFT PIN Diode Fixed Flat Panel detector
- Acquisition Workstation / Veterinary Software
- Control Box
- 30 ft. cable/power cord for panel (tethered)
- Detector housing (Optional)

Detector Amorphous Silicon with GadOx Scintillator

Technical Specifications

- Resolution: 3,072 x 3,072 pixels (9.0 MP)
- Detection area: 17 x 17 in.
- Pixel pitch: 143 µm
- 3.6 lp/mm.
- A/D Conversion: 14 bits
- Gray Scale: 16,384
- Dynamic range: >15000 LSB
- Energy range: 40 - 150 kV
- High resolution image display preview: 3 - 5 seconds
- Data output: 1 G Ethernet
- Dimensions: W: 50 cm. (19.7 in.) x L: 49.7 cm. (19.5 in.) x D: 4.5 cm. (1.77 in.)



MedlinkDR_{VET} Acquisition Workstation

Dell Optiplex Workstation

- Intel Core i3 Dual Core Processor 540 w/VT (3.06 GHz, 4M)
- 2 GB, Non-ECC, 1333 MHz DDR3, 1 x 2 GB
- 1 TB hard drive
- 1 TB secured removable hard drive
- 16 x DVD +/- RW SATA optical drive
- Integrated Video, GMA 4500

Dell Professional Monitor

- 19 in. LCD, 1.3 MP
- Resolution: 1280 X 1024 pixels
- Ratio: 800:1 (typical)

Warranty

- 3 years on workstation and monitor
- 2 years on DR flat panel

Software Features

- Same software as used with MedlinkCR systems
- Workstation pre-configured prior to shipment
- Two (2) local and two (2) web viewers licenses

Viewing Tools

- Window level
- Rotate
- Repeat/Reject
- Archive
- Image Preview
- DICOM Print
- DICOM Store
- ...and much more

Note:

Specifications are subject to change without notice. Revised: April 2011